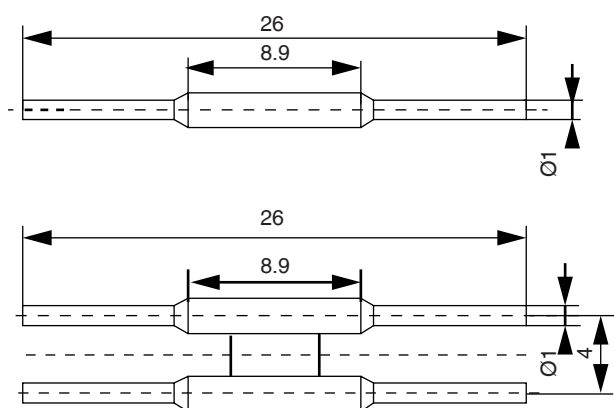


DIMENSIONS



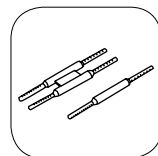
(*) Measured in mm



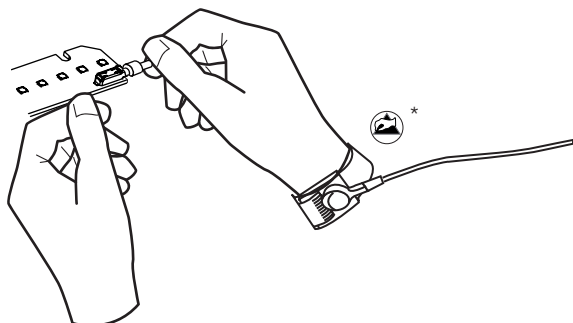
LINK CONNECTORS B2B MODULES are ideal to connect linear LED modules. These connectors eliminate the use of small cable connections which are difficult to handle. Their small size (26x1mm) makes them perfect connectors for linear fixtures. Their maximum current is 6A. Easy to operate. Internally made of copper, externally plated and white PA plastic case, certified UL94. Minimum packaging of 100 units.

SPECIFIC TÉCNICAL DATA

CODE	PLASTIC	CONTACTS	SPECIFIC TÉCNICAL DATA			
			VOLTAGE (V)	MAX. CURRENT (A)	ROOM TEMPERATURE (°C)	MOQ (UNITS)
1 A POLE 31.70.06.345.1P.A	UL 94: V-2 WHITE	PLATED COOPER	600 EN60598	6	-30+85	250
1 B POLE 31.70.06.345.1P.B	UL 94: V-2 WHITE	PLATED COPPER	600 EN60598	6	-30+85	1500
2 A POLES 31.70.06.345.2P.A	UL 94: V-2 WHITE	PLATED COOPER	250 EN60598	6	-30+85	500
2 B POLES 31.70.06.345.2P.B	UL 94: V-2 WHITE	PLATED COOPER	250 EN60598	6	-30+85	100

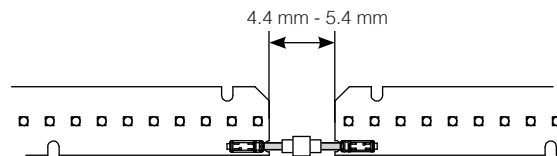


1



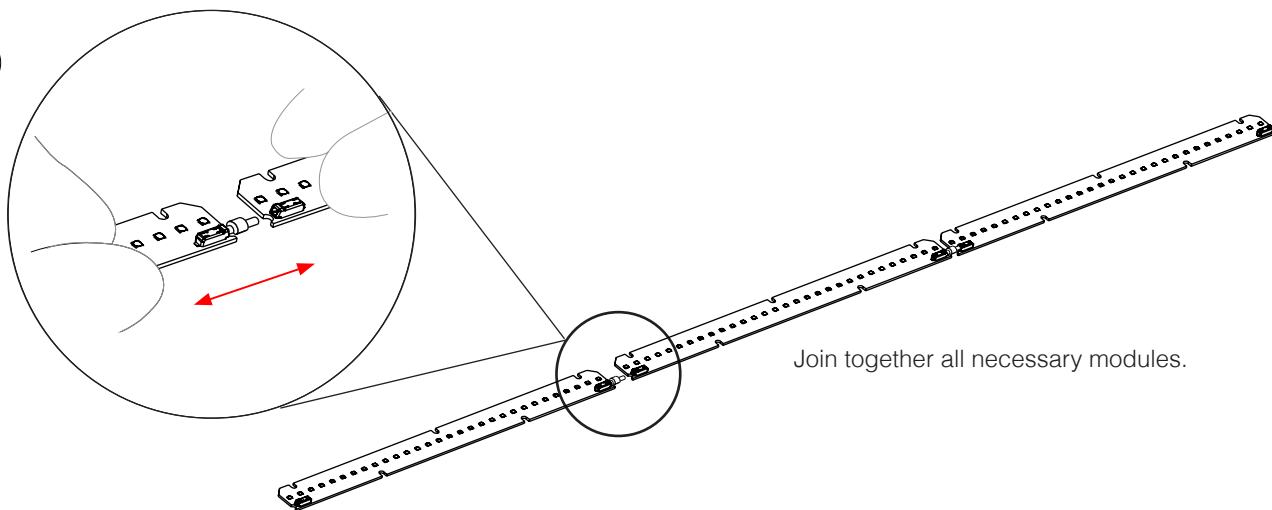
Place link connector in the LED module.
Protect and connect yourself with (*) ESD protection

2



Place the next LED module on the other side of the connector, and allow a distance of minimum 4.4 mm and maximum 5.4 mm between the LED modules.

3



Join together all necessary modules.

INSTALLATION AND SECURITY INFORMATION



MOUNTING AND INSTALLATION

I+D LED S.L. is not responsible for the installation of the product. LINK CONNECTOR B2B MODULES must be perfectly placed between the PCBs to keep optimal properties during life-time. LINK CONNECTOR B2B MODULES are not approved to be placed on SMD push in type connectors that are not in good conditions and perfectly clean. I+D LED S.L. in any case accepts responsibility over occasional loss of property, product damage, and damage caused t third parties.

If any type of chemical substance is used during the assembly of the luminaire or light engine, it must not have any type of curing by means of gas condensation; as these chemical substances may damage the LEDs and electronic components.

This product packaging is available in bags of 100-250-500-1500 units.



TEMPERATURE

LINK CONNECTOR B2B MODULES' life-time depends to a great extent on operating temperature. Under no circumstance temperature should exceed the maximum permissible limit here indicated. Exposure to higher temperatures might affect its long term proper functioning. Room temperature must be measured under worst-case conditions to ensure life-time and keep product's guarantee.